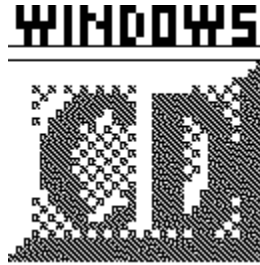


# WinCD 1.1 E



Windows Change Directory  
English version  
© Antero Aalto 1991

**Warning!** WinCD does not work in Windows' real mode.

## 1. What is WinCD?

You probably have noticed an annoying problem with Windows: Applications always start in the directory they exist. This is the Program Manager's fault, because the working directory isn't a part of the applications properties. **WinCD** solves this problem. Moreover, **WinCD** provides an easy way to change the working directory such that all apps start in it, until you change directory with **WinCD** again. You should know, however, that achieving this requires some preparations.

## 2. How does it work?

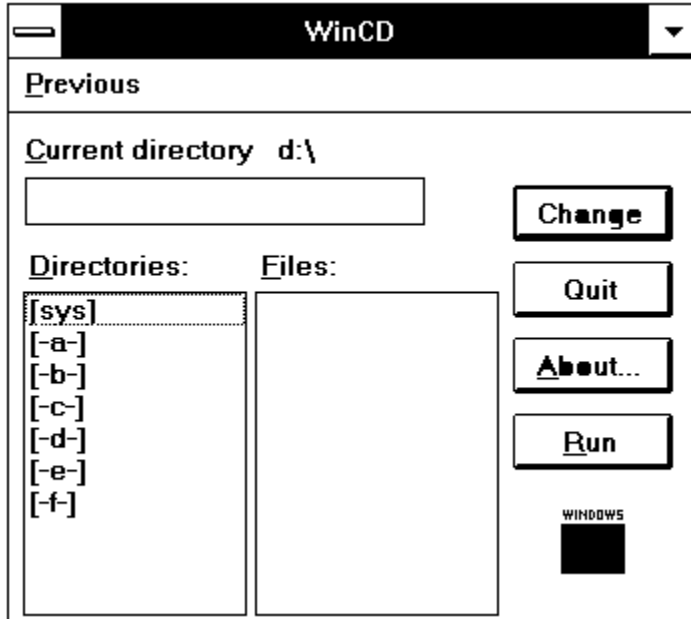
When you change directory with **WinCD**, the working directory is saved to a file. When **WinCD** starts, it reads the working directory from that file and changes to it. As **WinCD** now executes another application, it will run in the directory you wanted.

## 3. Usage

It is convenient to copy WINCD.EXE to Windows' directory or somewhere in the path, so that Program Manager's properties Command Line can be set up like this:

```
WINCD [application] [directory]
```

If **WinCD** is run without parameters it shows a dialog box in which you can change directory using the normal Windows' conventions.



There also exists a menu Previous, which contains six previous directories. When you change directory, all apps will run in the directory you selected, if required preparations have been made.

In addition you can see the list of files in the current directory. This makes it easy to verify you are in the directory you want. And yes, you can start applications by selecting the executable or an associated file and clicking the Run button (or by using double click).

#### 4. Preparations

To work properly with an application WinCD requires changing application's properties in Program Manager (or whatever your shell is). For example, if we want Notepad to start in the current **WinCD** directory, we have to change Notepad's properties Command Line to

```
WINCD NOTEPAD.EXE
```

Now Notepad starts in the current **WinCD** directory. Optionally, if we want Notepad to start always in the same directory, say C:\TEXT, we change Command Line to

```
WINCD NOTEPAD.EXE C:\TEXT
```

Changing the properties Command Line has an awkward side effect: Program Manager changes the applications icon, too. Therefore we have to change that back by selecting properties Change Icon and writing the applications name to File Name.

Changing the Command Line and Icon for every application by hand is a painful and unpleasant job. Therefore WinCD comes with WINCD.REC, a Windows Recorder macro file, that automates part of it. Using it is simple: run Recorder and open WINCD.REC. Then, for each application, activate its icon by clicking it in Program Manager, switch to Recorder and select Macro/Run.

*Hint:* To start WinCD itself in the current WinCD directory, make its Command Line to

read

WINCD WINCD.EXE

## 5. Changing the current directory file

By default **WinCD** saves the current directory to the file CURRENT.WCD in the Windows' directory. To override this default, add to WIN.INI's section [WinCD] line

DirFile=*filename*

where *filename* is the full path name of the desired file.